

**NEW PRODUCT**

# SFX12V Nonstop Power Supply



Battery pack "BS03A-H16/2.5L"



Optimum structure considered airflow. High-grade parts used in.

**Continuous 160W**  
**Peak 220W**

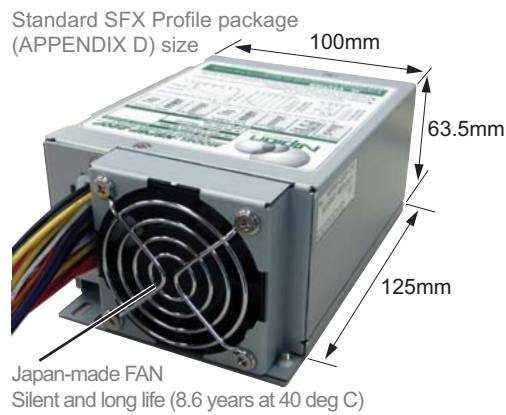
| Input voltage               | Efficiency | Power factor |
|-----------------------------|------------|--------------|
| AC100V                      | 75.1%      | 99.5%        |
| AC240V                      | 79.1%      | 96.3%        |
| DC16.8V (Battery operation) | 90.2%      | -            |

(Measured value)

## Model: NSP6F-220P-S10

### SFX 12V standard, palm size small PC power supply

Comply with Standard SFX Profile Package (APPENDIX D) size \* FAN is projected at back side

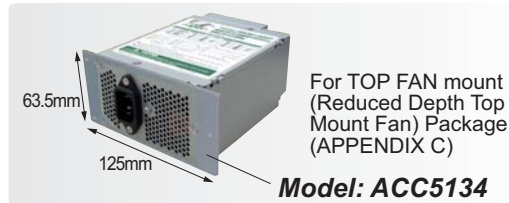


Japan-made FAN Silent and long life (8.6 years at 40 deg C)

Installable for other mounting sizes by using optional attachment panel



Model: ACC2837



Model: ACC5134

### Backup operation

Backup operation at blackout is possible by connecting dedicated battery pack. High efficiency 90% and keeps power loss minimum.

Battery pack

#### Model: BP03A-H16/2.5L

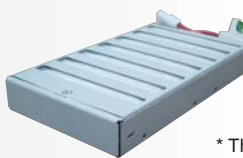
Small size Ni-MH battery pack  
Capacity: 16.8V/2.5AH  
Size (mm): 92.5W x 159.5D x 23.7H



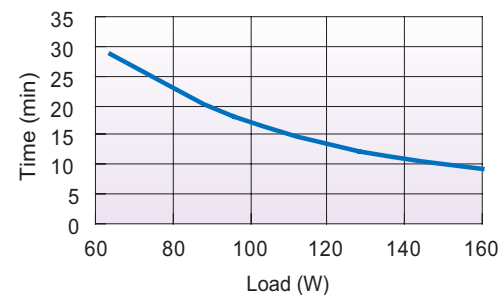
#### Model: BS03A-H16/2.5L

Installable for 3.5 inch bay

Small size Ni-MH battery pack  
Capacity: 16.8V/2.5AH  
Size (mm): 101.5W x 175D x 25H



#### Backou time



\* This is not guaranteed value but reference value at default condition.  
\* This graph shows the time length from the time of blackout to the time of PSU output shutdown.

**Small and powerful!**  
**Palm size**  
**Nonstop power supply**

### Automatic shutdown

Automatic shutdown at blackout is also possible by using automatic shutdown control software "NSP Pro2". (In case of Windows 2000/XP, OS standard UPS service also can be used.)

Automatic shutdown software

#### Model: NSP Pro 2

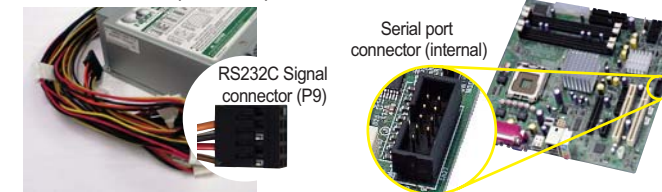
OS specification:  
Windows 2000/XP/Vista

- Detail time setting that Windows standard UPS service does not cover is settable (power recovery supervisory time)
- Visible and easy setting by GUI



Signal connection

When using automatic shutdown function, please connect RS232C connector (9 pin) to serial port connector of motherboard (internal).



\* TTL signal type is also available. Model: NSP6F-220P-T10

### Input/output

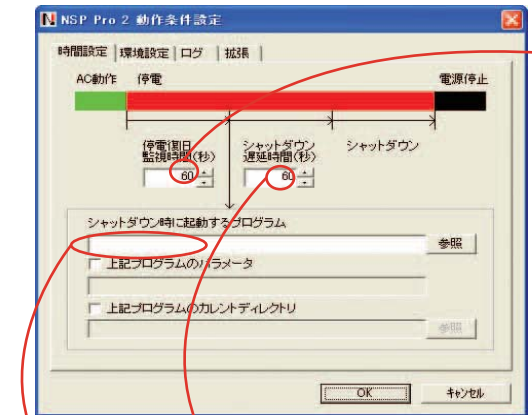
Input

|          |                                |
|----------|--------------------------------|
| AC input | 85 - 264V (Worldwide input)    |
| DC input | 16.8V (Dedicated battery pack) |

Output

| Output voltage                       | Note: Main 3 outputs are easily customizable to other voltage (15V or less) |     |      |      |       |
|--------------------------------------|---|-----|------|------|-------|
|                                      | +3.3V   | +5V | +12V | -12V | +5VSB |
| Max. current/Max. power (Continuous) | 10A   | 10A | 10A  | 0.3A | 1.5A  |
|                                      | Total 160W or less  |     |      |      |       |
| Peak current/ Peak power (Within 5S) | 10A   | 10A | 14A  | 0.3A | 1.8A  |
|                                      | Total 220W or less  |     |      |      |       |
| Min. current                         | 0A  | 0A  | 0A   | 0A   | 0A    |

Monitor screen (Condition setting)



The time to judge that recovery is impossible after a blackout can be set up in second.

Shutdown delay time, after it is judged that recover is impossible, can be set up in second.

Specific program in ".exe" and ".bat" can be set up to operate at the moment is judged that recovery is

### Other features

- Min. load current 0A for all outputs  
No need to care about min. load current. Various types of loads within the range of output specification.
- Synchronous rectification chopper PCB  
Chopper unit is adopted for individual output to easily customize output. Also high efficiency by PFC circuit.

Measured value (at rated load)

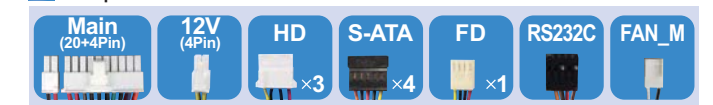
| Input voltage               | Efficiency |
|-----------------------------|------------|
| AC100V                      | 75.1%      |
| AC240V                      | 79.1%      |
| DC16.8V (Battery operation) | 90.2%      |



- Expected life more than 10 years  
Expected life is more than 10 years at rated load and intake air temperature 35 deg C. (FAN is 8.6 years at 40 deg C.)

- Main connector 20+4 pin  
Available for both 20 pin and 24 pin motherboard

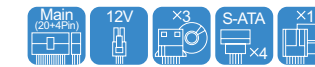
Output connector



## New Flex ATX spec, small power supply release!

### Model: PCFX-220P-X2S

- Small size 8.5W x 41H x 150D, installable for 1U rack server
- Modified model with silent FAN is also available
- Active filter (PFC circuit) equipped
- World wide input



|                                      |                             |     |      |      |       |
|--------------------------------------|-----------------------------|-----|------|------|-------|
| AC input                             | 90 - 264V (Worldwide input) |     |      |      |       |
| Output voltage                       | +3.3V                       | +5V | +12V | -12V | +5VSB |
| Max. current/Max. power (continuous) | 10A                         | 10A | 10A  | 0.3A | 2A    |
|                                      | Total 75W or less           |     |      |      |       |
|                                      | Total 170W or less          |     |      |      |       |
| Peak current/ Peak power (within 5S) | 12A                         | 12A | 12A  | 0.3A | 2A    |
|                                      | Total 85W or less           |     |      |      |       |
|                                      | Total 220W or less          |     |      |      |       |
| Min. current                         | 0A                          | 0A  | 0.5A | 0A   | 0A    |



Security camera and stand alone DVR is popular applications.

**Continuous 170W** **Peak 220W**