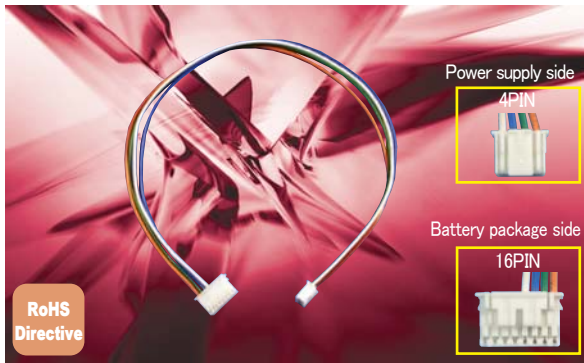


Battery Package Connection Harness WH-16PAD04XA-350



Model	Stock		
WH-16PAD04XA-350	Standard stock		
Model Name Coding WH - 16PAD 04XA - 350			
①	②	③	④
① Wire harness	② 16-pin PAD connector of battery package side	③ 4-pin XA connector of power supply side	④ Harness length (mm)

● Signal harness for 24V output type OZP/GPSA series (battery backup is possible) to connect with a battery package and conduct charge/discharge control.

Compatible Power Supply

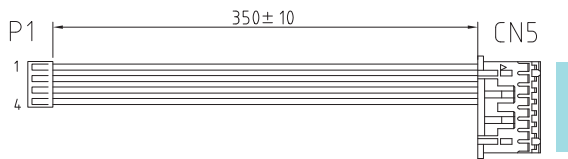
Model	Page	Model	Page
OZP-120 series	C-E86	GPSA-360-24-TP	C-E122
OZP-170 series	C-E104	GPSA-750-24-TP	C-E136

※It can be connected to OZP series 24V output (with battery backup) type.

Compatible Battery Package

Model	Page
BS14A-H24/2.5L	C-H2

Outline Drawing



Product Specification

Items	Specification	Measurement conditions
Operating temp.	-10~70°C	Thermal gradient: 15°C/H
Storage temp.	-25~70°C	Thermal gradient: 15°C/H
Relative humidity	10~95%	No condensation
Warranty	One year after delivery. If any faults belong to us, the defective unit shall be repaired or replaced at our cost.	It shall be used under normal temperature, humidity, and rating.

Pin Assignment

CONNECTOR TYPE	PIN No.	PIN No.	FUNCTION	WIRE COLOR	WIRE TYPE	CONNECTOR TYPE
P1 (power supply side)			CN5 (battery package side)			
Housing: XAP-04V-1(JST) or equivalent Terminal: SXA-001T-P0.6(JST) or equivalent	1	1	VB	ORANGE	UL1007 AWG#22	Housing: PADP-16V-1-S(JST) or equivalent Terminal: SPH-001T-P0.5L(JST) or equivalent
	2	3	ON/OFF	GREEN		
	3	5	AC FAIL	BLUE		
	4	7	BATT LOW	WHITE		
	2			N.C.		
	4			N.C.		
	6			N.C.		
	8			N.C.		
	9			N.C.		
	10			N.C.		
	11			N.C.		
	12			N.C.		
	13			N.C.		
	14			N.C.		
	15			N.C.		
	16			N.C.		